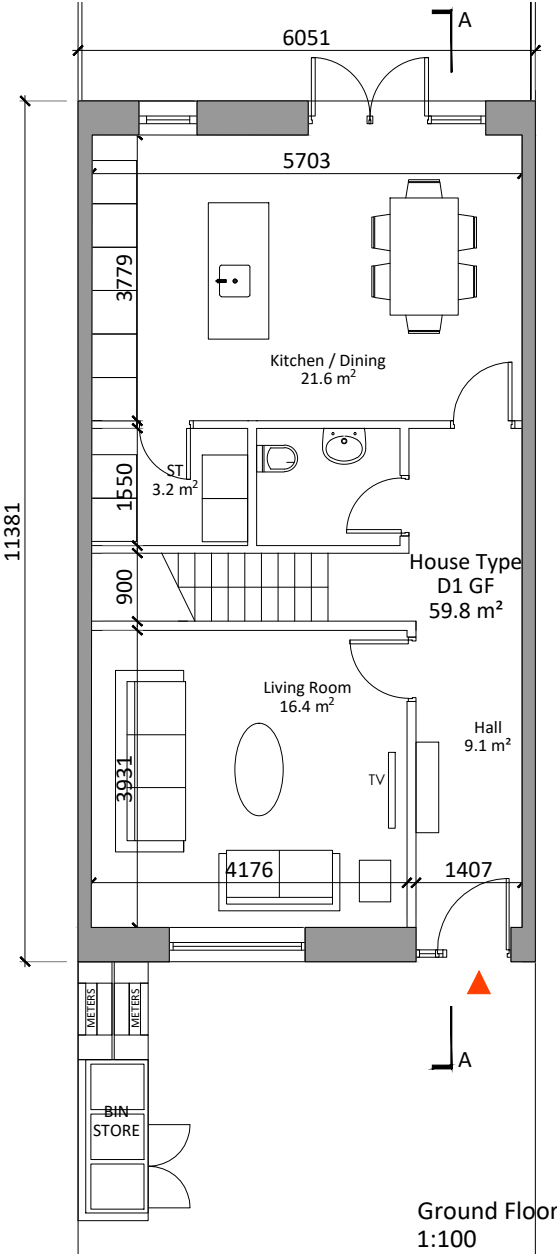
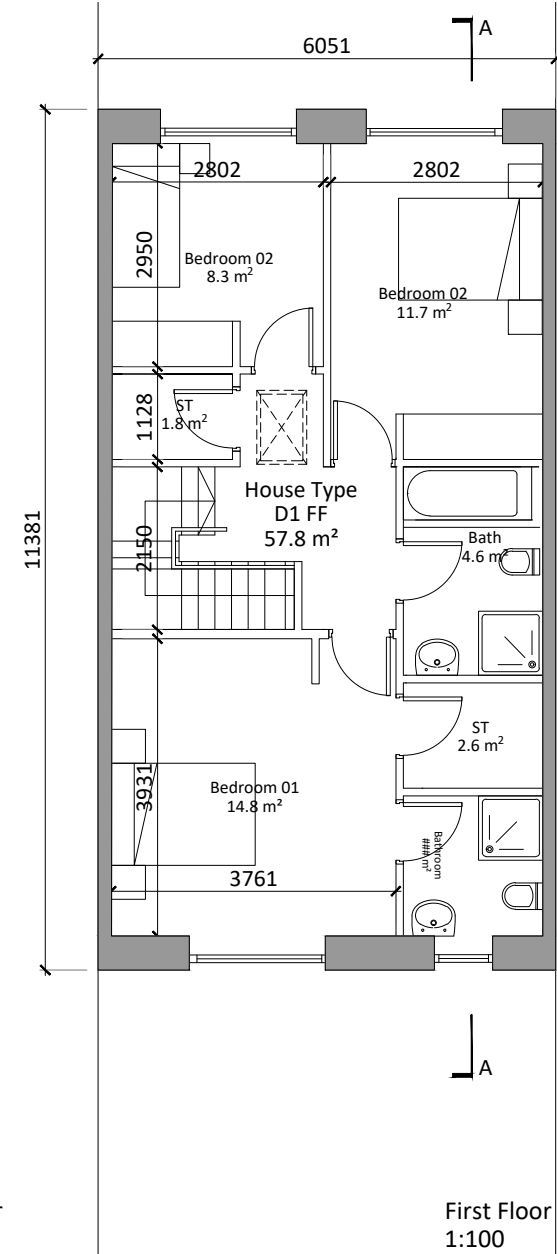


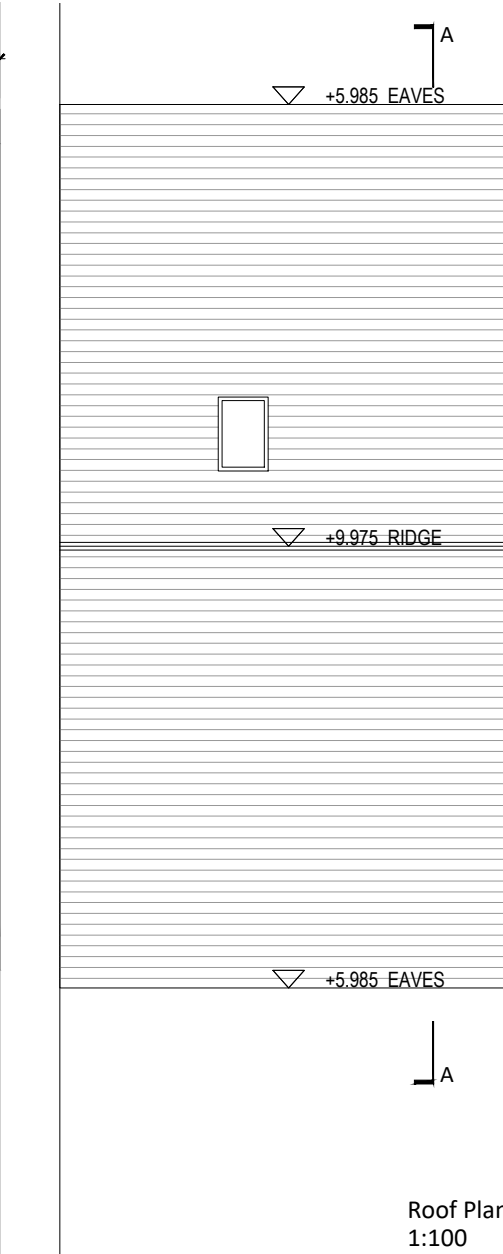
Section A-A
1:200



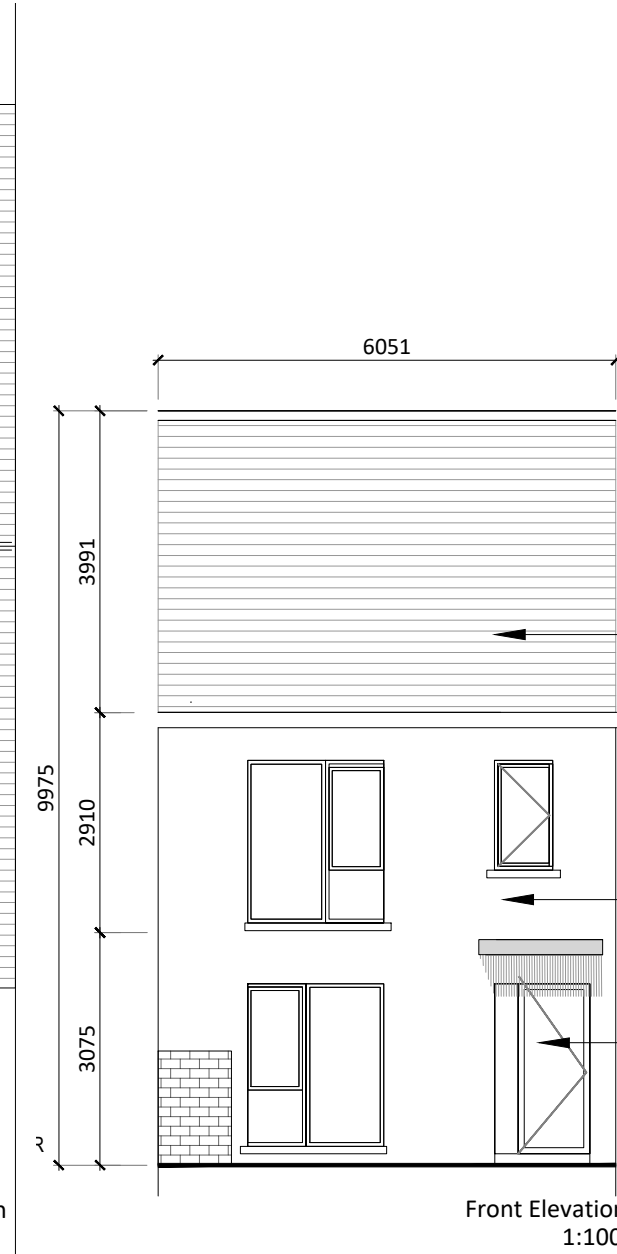
Ground Floor
1:100



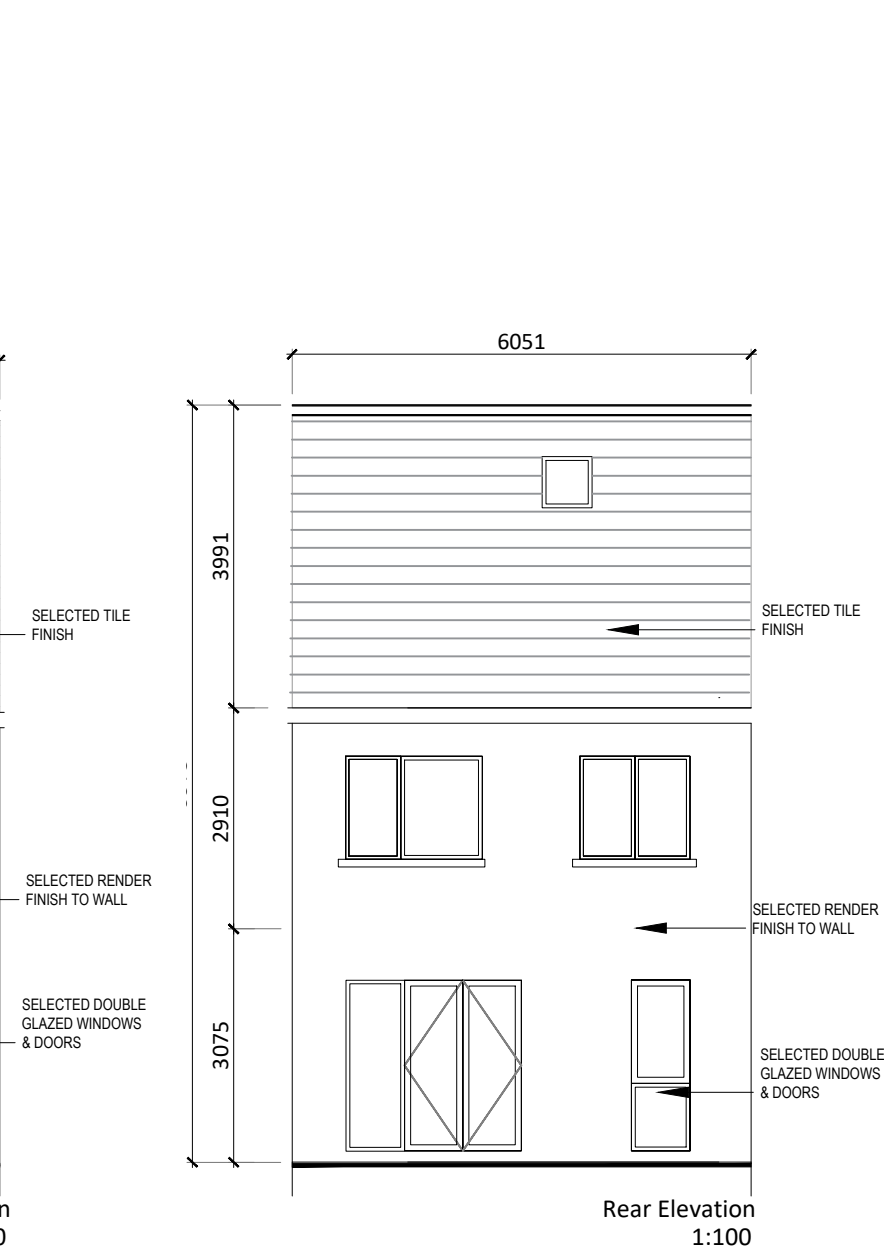
First Floor
1:100



Roof Plan
1:100

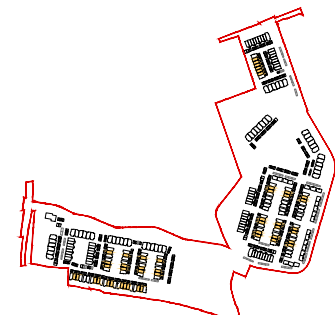


Front Elevation
1:100



Rear Elevation
1:100

House Type D1 - Plans, Section, Elevations



Revision Description	Date	Rev. No.	Issued by

mahony pike

Project No.: 20007 Scale @ A3: As Noted
 Project Lead: DMD Date Printed: 10-06-2022
 Drawn By: KÓC Current Rev.: P.02
 Model No.: 20007-OMP-HT-ZZ-DR-A-1000
 Purpose: Planning

Project: Ballyulster SHD (Phase 1)
 Location: Ballyulster, Celbridge, Co. Kildare
 Client: Kieran Curtin, Receiver over certain assets of Maplewood Developments Unlimited Company (in liquidation and in receivership)

Drawing Title: House Type D1- Plans, Section, Elevations
 Drawing No.: 20007-OMP-HT-D1-DR-A-1000
 Suitability - Checked By - Date

Figured dimensions only to be used. This drawing is copyright of O'Mahony Pike Architects Ltd. All information is shared as per approved use in accordance with BS1192(2007) + A2(2016), Table 5; Standard Codes for Suitability of Models and Documents. If 'Information Approval Check' is empty, this information has been shared at S0 - WIP.